

## Holiday Calendar

The Credit Union will be closed:

**Martin Luther King, Jr. Day**

Monday, January 16

**Presidents' Day**

Monday, February 20

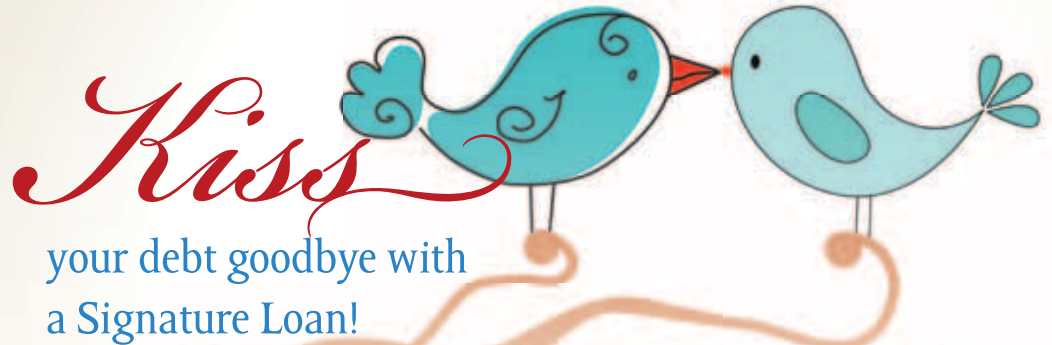
Although we are closed on these days, Matey, Home Banking, Electronic Bill Pay and both our ATM and point-of-sale networks will be open 24/7.

## Dividends

Rates subject to change.	Last Quarter Actual APY	This Quarter Anticipated APY
Regular Shares*	0.10%	0.10%
Christmas Club	0.10%	0.10%
IRA (under \$2,000)	0.15%	0.15%
IRA (over \$2,000)	0.20%	0.20%
Checking*	0.10%	0.10%
<b>Money Market**</b>		
\$0-\$9,999	0.15%	0.15%
\$10,000-\$50,000	0.175%	0.18%
\$50,001 +	0.20%	0.20%
Certificates — Call for current yields.		

\*Dividends are based on credit union earnings. Regular shares earn day-in, day-out dividends with dividends paid quarterly. Checking accounts earn day-in, day-out dividends every month a minimum balance of \$1,000 is maintained. Dividends are declared by the Board of Directors at the end of each dividend period.

\*\*There is a \$10 charge on balances that fall below \$2,500. Rates subject to change without notice.



## your debt goodbye with a Signature Loan!

Are you stressed out about how you're going to keep up with all your high-rate debt? Ask OCFCU about a signature loan. All your prior debts could be paid in full and cleared with one swoop... and the only payment left will be to OCFCU. With our low rates, you'll save hundreds, if not thousands of dollars over the life of the loan.

Or maybe you just want to start the New Year off with a little extra cash in your pockets. You could take off on a mid-winter getaway, cover emergency expenses, whatever you wish!

We've even extended the term of our Signature Loan for an additional year to make your monthly payment more affordable.

### Regular terms & payments estimate

Regular terms & payments estimate	Payments
\$20,000 at 7.9%* for 4 years	\$488.00
\$15,000 at 7.9%* for 4 years	\$366.00
\$10,000 at 7.9%* for 4 years	\$244.00
\$5,000 at 7.9%* for 3 years	\$157.00

### Special promotion estimate

Special promotion estimate	Payments
\$20,000 at 7.9%* for 5 years	\$405.00
\$15,000 at 7.9%* for 5 years	\$304.00
\$10,000 at 7.9%* for 5 years	\$203.00
\$5,000 at 7.9%* for 4 years	\$121.00

OCFCU also offers a type of Signature Loan that places a courtesy lien on your primary residency for the purpose of a tax deduction.\*\* Check with your tax advisor on possible tax advantages. (Please note: Loan requirements dictate that for signature loan refinances, you must draw an additional \$1,000 above the refinance amount.)

For full details, call the loan department at 562-426-8838 or visit [www.occu.net](http://www.occu.net).

The cash you need is just a click or call away. Hurry! This extended repayment term offer expires 3/30/12.

\*Preferred rate for those with highest credit scores. Families cannot exceed \$20,000 maximum unsecured credit per household. All loans are subject to credit approval. The credit union is an equal opportunity lender and makes loans without regard to race, color, religion, sex, handicap, family status or national origin. You will receive a complete disclosure of rate and terms associated with your loan before you sign any loan documents. Credit lines can be revoked at the credit union's discretion.

\*\*There is a \$25 lien application fee for documentation and filing. A reconveyance fee will be assessed at the time of payoff at the prevailing rate.

# Join Us At Our Annual Meeting!

On **March 20, 2012**, OCFCU will be holding its **Annual Meeting**. As a credit union member/owner, this is the time for you to exercise your rights and privileges to govern your credit union.

Plan to arrive early, enjoy some refreshments and socialize with other members. We'll also

be giving away numerous door prizes—including cash giveaways—so don't forget to attend!

Bring a friend, family member or co-worker to the Annual Meeting, and if that person is eligible to join they may sign up before the meeting and be entered into the drawings.

Plan to attend Ocean Crest FCU's Annual Meeting and exercise your right to vote this year!

**When:** Tuesday, March 20, 2012  
6:30 p.m.

**Where:** Long Beach  
Petroleum Club  
3636 Linden Ave  
Long Beach, CA 90807



# E-statements



Save time. Save space. Save money. Save a tree!

Environmentally-conscious and security-minded people are choosing to receive e-statements in place of traditional paper statements. OCFCU offers this service FREE to our members.

When your statement is ready to view, we will send you an email. Then you simply log on to The Vault (a secure website) to view your statement. You can access The Vault anytime—day or night—and storing your account statements electronically in The Vault means no more paper to file! With e-statements you can:

- View and print your credit union statement at your convenience
- Receive your statements days faster than a traditional paper statement
- Store statements electronically for up to five years
- Rest assured that your personal financial information is safe and secure

To take advantage of e-statements for your savings and/or checking account, visit our website or call today!

# What is an IRA?

## TRADITIONAL IRA

An IRA – Individual Retirement Account – is a special savings plan to help you accumulate funds for your retirement.

You can open or make contributions to your IRA anytime up to and including the due date of your tax return for the previous tax year. All earnings you accumulate in your IRA remain tax-sheltered until withdrawn.

You can contribute either in one or more contributions up to a maximum allocation

for the year. In 2011, you can contribute up to \$5,000. If you're over age 50, you can contribute up to an additional \$1,000. Withdrawal prior to age 59½ would result in penalty and fees.

## ROTH IRA

A Roth IRA has a couple of key differences from a Traditional IRA.

- Contributions are non-deductible but all withdrawals, including earnings, are tax-free if the account has been open for five years and the account holder is 59½ or older.
- All the earnings you accumulate in your IRA remain tax sheltered and if they remain in

the account for a period of five successive tax years they can be withdrawn tax-free. Certain criteria must be met to enjoy tax- and penalty-free distributions.

## COVERDELL EDUCATION SAVINGS ACCOUNT (ESA)

The Coverdell ESA is a type of tax-advantaged savings account created specifically for paying qualified higher education expenses.

You can contribute either in one or more contributions, up to \$2,000 to a child's ESA. All distributions of earnings are tax-free and can be withdrawn anytime, either in total or partially as needed, if they're used for qualified education expenses.

All IRAs can be transferred into Certificates of Deposit. Terms of six months to five years are available.

# Christmas Club – Prepare for Next Year's Wish List!

Holiday shopping always seems to sneak up on you, and each year costs just a bit more. This year, be prepared for the holidays: Put money into an OCFCU Christmas Club account all year long!

It only takes \$5 to open an OCFCU Christmas Club account. You can then make deposits through payroll deduction or by mail. Our Christmas Club pays out the first week in November into members' savings accounts and is immediately available for use. Early closure of the account will result in forfeiture of dividends.

Start saving for your OCFCU Christmas Club today!  
Ask a member service representative for details.



**Ocean Crest**  
Federal Credit Union

2525 Cherry Avenue, Suite 100 • Signal Hill, CA 90755  
Mail: PO Box 92439 • Long Beach, CA 90809

## Phones:

Voice (562) 426-8838  
CA only (800) 544-8011  
Matey (800) 348-8279  
Fax (562) 490-0958

**Web:** [www.OCCU.net](http://www.OCCU.net)

**Email:** [postmaster@OCCU.net](mailto:postmaster@OCCU.net)

## Hours:

M-W & F 8:30 a.m. – 5 p.m.  
TH 10 a.m. – 5 p.m.



All loans are subject to credit approval. The credit union is an equal opportunity lender and makes loans without regard to race, color, religion, sex, handicap, family status or national origin. Dividends are based on the credit union's earnings at the end of a dividend period and thus cannot be guaranteed. Rates, terms, conditions and services are subject to change after the account is opened. Yields and rates are subject to change at any time without notice. For more information, refer to your Truth-in-Savings Disclosure or contact a credit union employee. The credit union may provide information about products and services available to members from other sources. However, it does not warrant, nor accept liability for the actions, products or services of others.

APR=Annual Percentage Rate. APY=Annual Percentage Yield.



Your savings federally insured to at least \$250,000 and backed by the full faith and credit of the United States Government. National Credit Union Administration, a U.S. Government Agency.